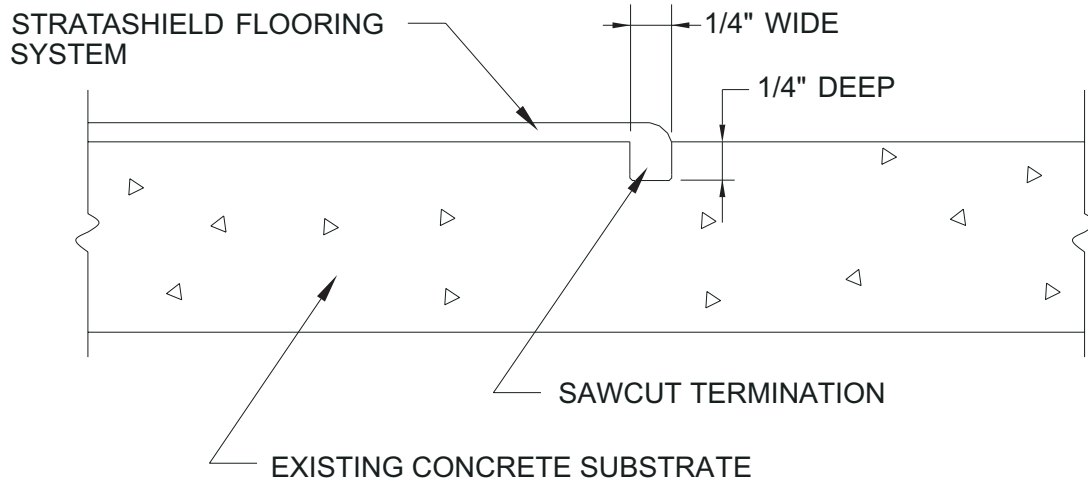


# Standard Flooring Details Guide



# TABLE OF CONTENTS

	Detail No.		Detail No.
Leading Edge Termination Detail for Self-Leveling and Laminate Flooring Systems	TFS-01	Control Joint Treatment Details for Self-Leveling and Laminate Systems—Alternate Method B	TFS-09A
Leading Edge Termination Detail for Mortar Flooring Systems	TFS-02	Existing Construction Joints	TFS-10
Termination Detail for Mortar at Nose Angle Iron at Loading Dock or Building Joint	TFS-03	Detail Treatment for Mortar at Construction Joints	TFS-10A
Termination Detail for Mortar and Laminate at Circular Floor Drain	TFS-04	Isolation Joint Treatment for Laminate and Mortar at Wall/Floor Junction Where No Cove Base Required	TFS-11
Crack Treatment Detail for Laminate and Mortar	TFS-05	Isolation Joint Treatment for Laminate and Mortar at Wall/Floor Junction Where Cove Base is Required	TFS-12
Laminate and Mortar Flooring Detail Treatment for Bridging Multiple Hairline Cracks	TFS-06	Expansion Joint Treatment Detail	TFS-13
Laminate and Mortar Detail Treatment for Moving Cracks	TFS-07	Cant Cove Base Detail for Laminate and Mortar Systems	TFS-14
Control Joint Treatment Details for Mortar Systems—Alternate Method A	TFS-08	Rolled Radius Cove Base Detail for Laminate and Mortar Systems	TFS-15
Control Joint Treatment Details for Mortar Systems—Alternate Methods B and C	TFS-08A	Cant Cove at Sleeved or Non-Sleeved Pipe Penetration in Floor	TFS-16
Control Joint Treatment Details for Self-Leveling and Laminate Systems—Alternate Method A	TFS-09	Cove Base Detail for New Gypsum Board Walls	TFS-17
		Cove Base Detail for FRP Panel Walls	TFS-17A



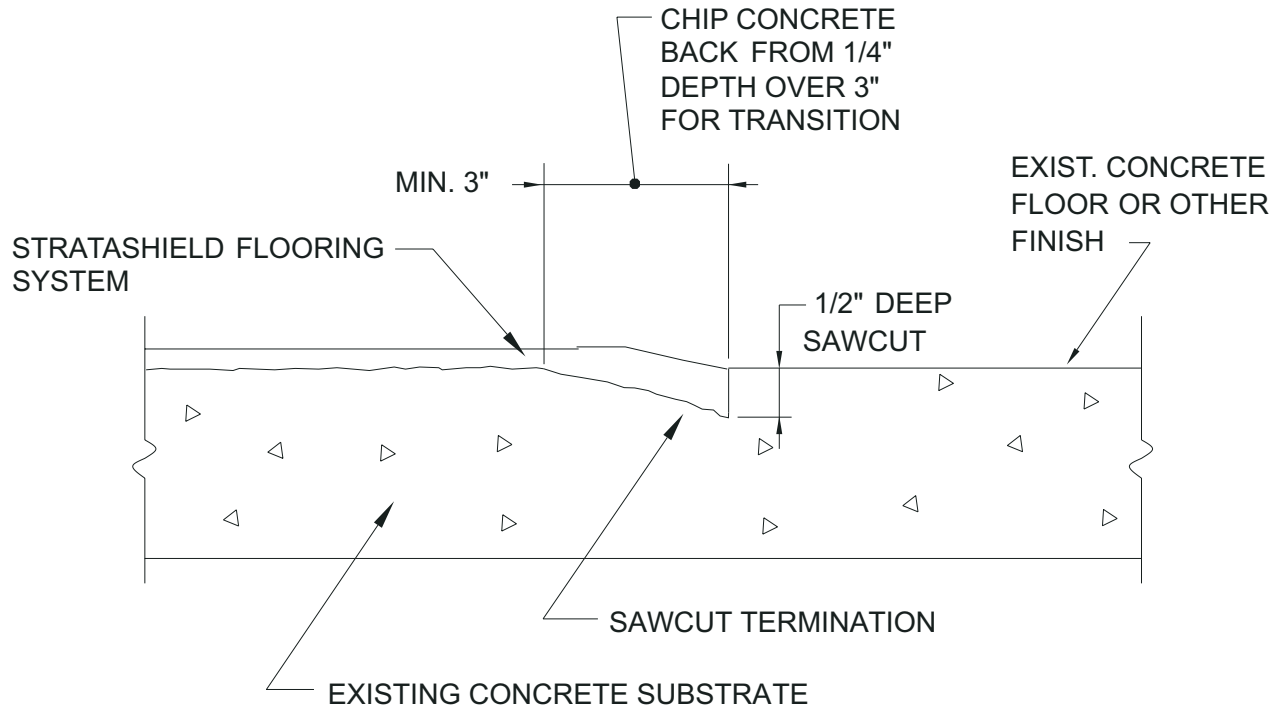
FLOORING SYSTEMS: SERIES 210, 222, 237, 238, OR 245  
 OVER PRIMER SERIES 201 AND OVER PERTINENT  
 FILLER/SURFACERS, UNDERLAYMENTS OR REPAIR PRODUCTS  
 SUCH AS SERIES 206, 214, 218 AND 219.

## TNEMEC STRATASHIELD STANDARD FLOORING DETAILS

LEADING EDGE TERMINATION DETAIL FOR  
 SELF-LEVELING AND LAMINATE FLOORING SYSTEMS

**DWG. NO. TFS-01**

REV.0



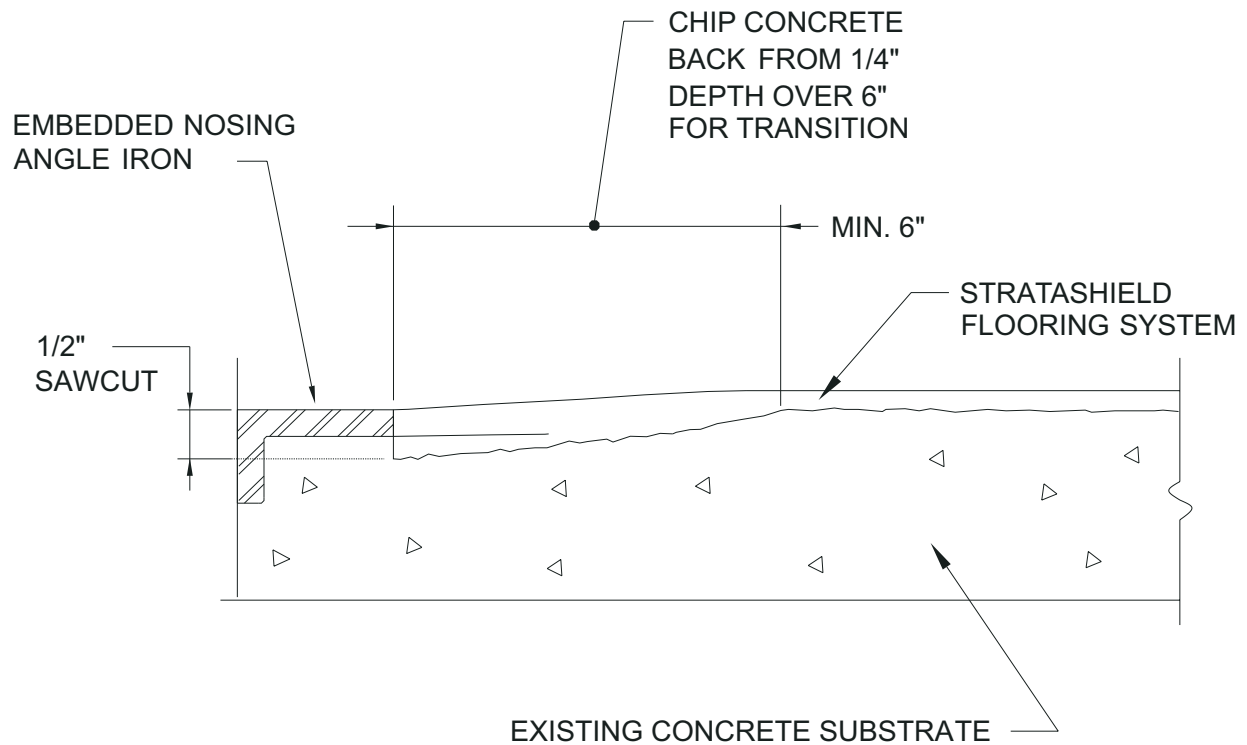
FLOORING SYSTEMS: SERIES 223, 237, 238, 239 OR 244  
OVER 201 PRIMER AND OVER PERTINENT FILLER/SURFACERS  
UNDERLAYMENTS OR REPAIR PRODUCTS SUCH AS SERIES  
206, 214, 218 AND 219.

## TNEMEC STRATASHIELD STANDARD FLOORING DETAILS

LEADING EDGE TERMINATION  
DETAIL FOR MORTAR FLOORING SYSTEMS

**DWG. NO. TFS-02**

REV.0



FLOORING SYSTEMS: SERIES 223, 237, 238, 239 OR 244  
 OVER 201 PRIMER OR NOSING MATERIALS AND OVER PERTINENT  
 FILLER/SURFACERS, UNDERLAYMENTS OR REPAIR PRODUCTS  
 SUCH AS SERIES 206, 214, 218 AND 219.

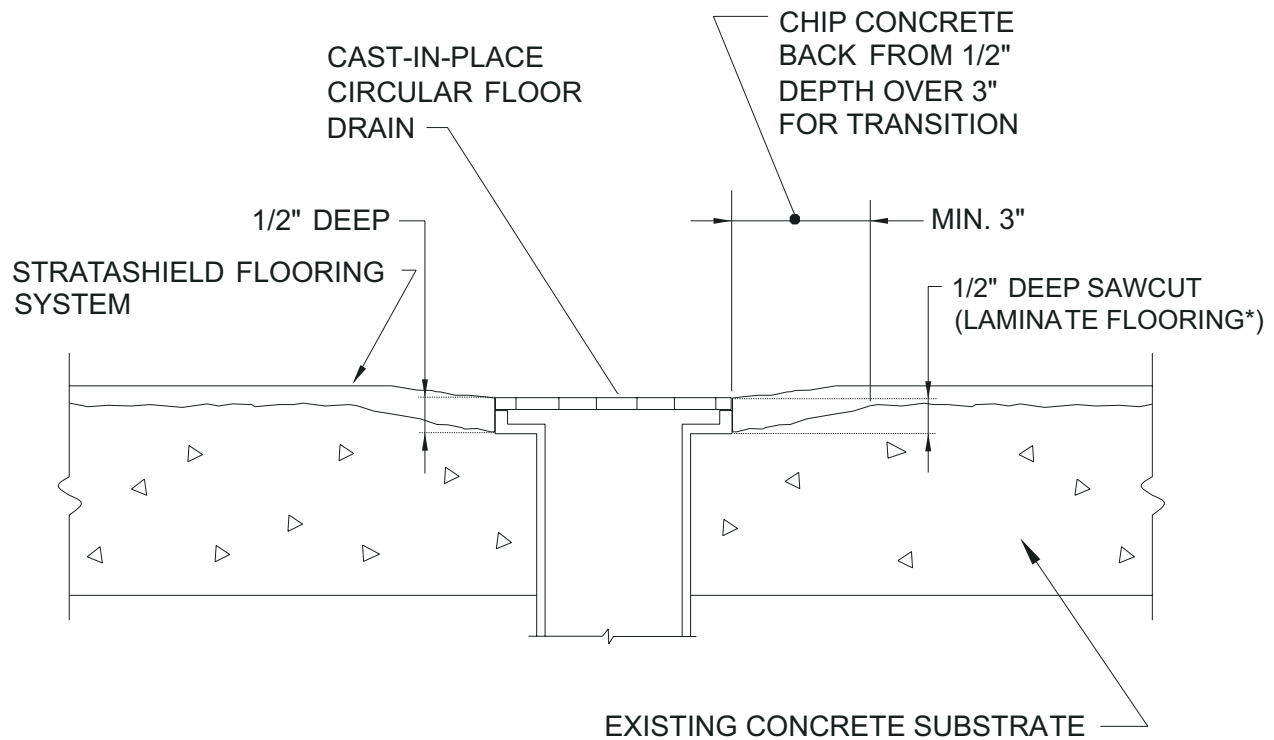
## TNEMEC STRATASHIELD STANDARD FLOORING DETAILS

TERMINATION DETAIL FOR MORTAR AT  
 NOSE ANGLE IRON AT LOADING DOCK  
 OR BUILDING JOINT

**DWG. NO. TFS-03**

REV.0





NOTE: CHIP CONCRETE BACK FROM 1/2" DEEP AT EMBEDDED DRAIN UP TO PREPARED SURFACE OVER MINIMUM OF 3" TO FORM TRANSITION.

FLOORING SYSTEMS: SERIES 222, 223, 224, 237, 238, 239, 244 OR 245  
OVER 201 PRIMER AND/OR PERTINENT FILLER/SURFACERS,  
UNDERLAYMENTS OR REPAIR PRODUCTS SUCH AS  
SERIES 206, 214, 218 AND 219.

THIS SAME DETAIL SHOULD BE USED FOR TERMINATIONS OF  
TNEMEC FLOORING SYSTEMS AT STEEL PLATE EMBEDDED  
IN CONCRETE SLABS.

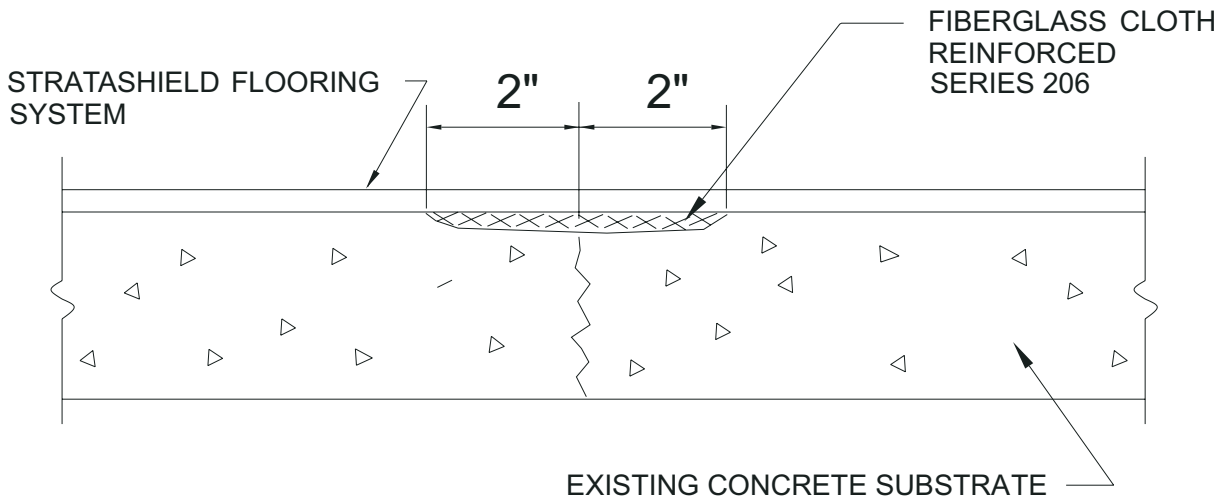
\*THIS SAME DETAIL SHOULD BE USED FOR SELF LEVELING  
AND LAMINATE FLOORING SYSTEMS EXCEPT WITH SAWCUT  
TO BE 1/4" DEEP.

## TNEMEC STRATASHIELD STANDARD FLOORING DETAILS

TERMINATION DETAIL FOR MORTAR  
AND LAMINATE AT CIRCULAR FLOOR DRAIN

**DWG. NO. TFS-04**

REV.0



ABRADE OR SHOTBLAST DEEPER (20-40 MILS) 2" EACH SIDE OF ISOLATED CRACKS, PRIME WITH SERIES 201 OR 203, APPLY SERIES 206 IN THIS AREA, AND INSTALL FLOORING SYSTEM OVER SERIES 206.

FOR FLOORS WITH ISOLATED CRACKS WHERE NO EVIDENCE OF CRACK MOVEMENT OR SETTLEMENT IN FLOOR OCCURS ON EITHER SIDE OF CRACK AND WHERE FLOOR IS NOT EXPOSED TO DRASTIC THERMAL CHANGE.

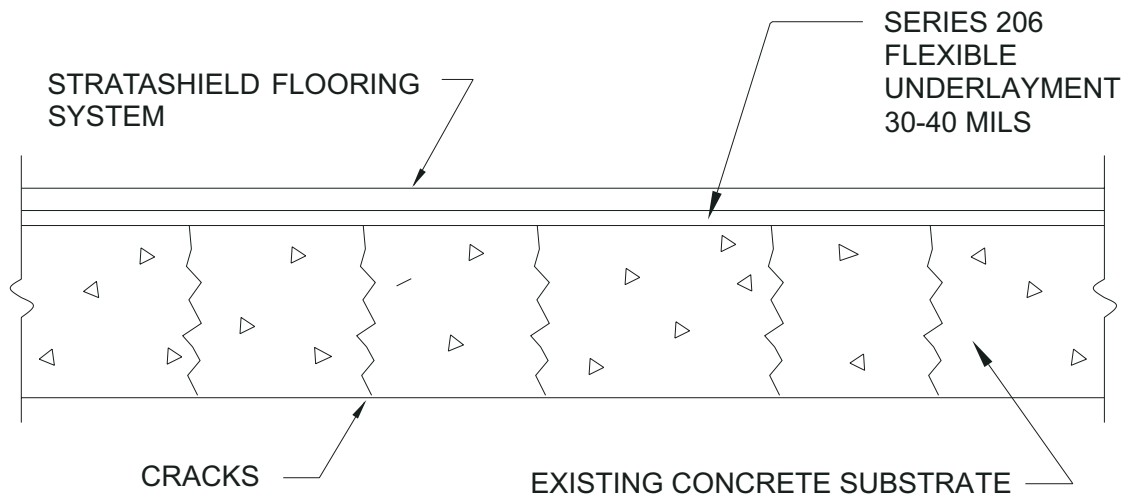
FLOORING SYSTEMS: SERIES 210, 222, 223, 224, 237, 238, 239, 244 OR 245 OVER 201/203 PRIMERS AND OVER PERTINENT FILLER/SURFACERS, UNDERLAYMENTS OR REPAIR PRODUCTS SUCH AS SERIES 206, 214, 218 AND 219.

## TNEMEC STRATASHIELD STANDARD FLOORING DETAILS

CRACK TREATMENT DETAIL  
FOR LAMINATE AND MORTAR

**DWG. NO. TFS-05**

REV.0



ABRADE OR SHOTBLAST DEEPER (20-40 MILS) 2" EACH SIDE OF ISOLATED CRACKS, PRIME WITH SERIES 201 OR 203, APPLY SERIES 206 IN THIS AREA, AND INSTALL FLOORING SYSTEM OVER SERIES 206.

USE SERIES 206 @ 30-40 MILS AS FLEXIBLE UNDERLAYMENT TO BRIDGE HAIRLINE CRACKS IN FLOORS WHERE NO EVIDENCE OF SETTLEMENT AND WHERE FLOOR NOT EXPOSED TO DRASTIC THERMAL CHANGE.

FLOORING SYSTEMS: SERIES 210, 222, 223, 224, 237, OR 239  
OVER 201/203 PRIMERS AND OVER PERTINENT FILLER/SURFACERS,  
UNDERLAYMENTS OR REPAIR PRODUCTS SUCH AS  
SERIES 206, 214, 218 AND 219.

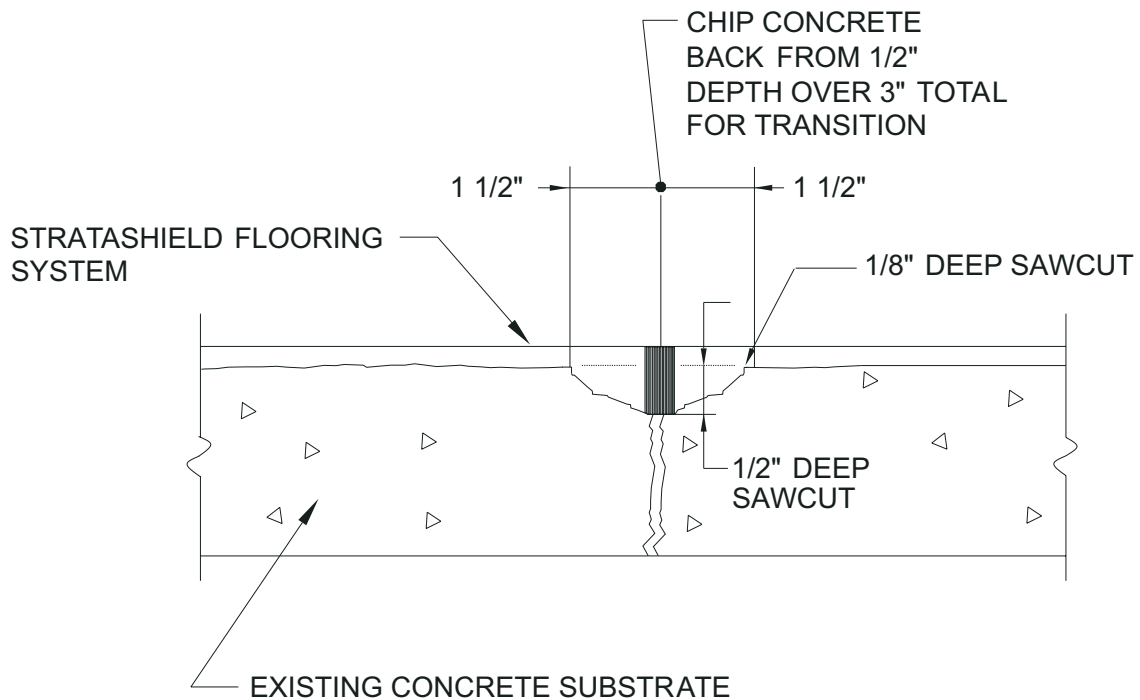
## TNEMEC STRATASHIELD STANDARD FLOORING DETAILS

LAMINATE AND MORTAR FLOORING DETAIL  
TREATMENT FOR BRIDGING MULTIPLE HAIRLINE CRACKS

**DWG. NO. TFS-06**

REV.0





TREAT CRACKS THAT ARE 1/16" WIDE OR WIDER AND CRACKS THAT SHOW EVIDENCE OF MOVEMENT (OPEN) OR DIFFERENTIAL MOVEMENT WITH THIS DETAIL.

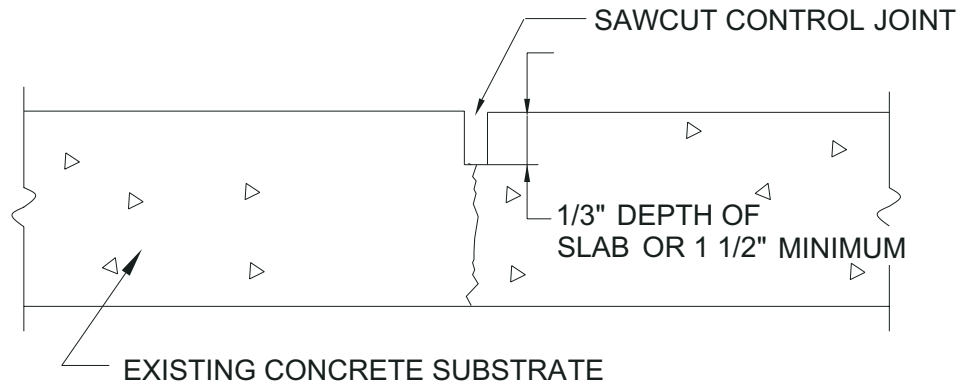
FLOORING SYSTEMS: SERIES 223, 237, 238, 239, 244 OR 245  
 USE FLOORING SYSTEM TO FILL CHASE OR NOSE DETAIL.  
 FOR OTHER THINNER SYSTEMS, USE SERIES 211, 214, 218 OR 219  
 TO FILL THE DETAIL SUFFICIENTLY THAT THE FLOORING SYSTEM  
 THICKNESS WILL COMPLETE THE DETAIL.

## TNEMEC STRATASHIELD STANDARD FLOORING DETAILS

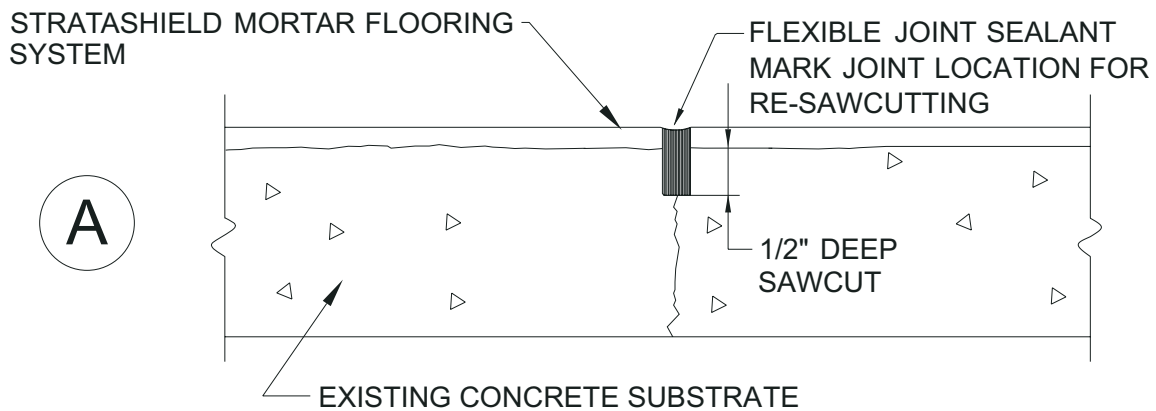
LAMINATE AND MORTAR DETAIL TREATMENT  
FOR MOVING CRACKS

DWG. NO. TFS-07

REV.0



TYPICAL SECTION  
EXISTING SAWCUT CONTROL JOINT



FOR LIGHT VEHICULAR TRAFFIC APPLICATIONS INSTALL FLOOR OVER CONTROL JOINT, ALLOW TO CURE, THEN SAWCUT AND FILL WITH FLEXIBLE JOINT SEALANT.

FLOORING SYSTEMS: SERIES 223, 237, 238, 239 OR 244  
OVER SERIES 201 PRIMER AND OVER PERTINENT  
FILLER/SURFACERS, UNDERLAYMENTS OR REPAIR PRODUCTS  
SUCH AS SERIES 206, 214, 218 AND 219.

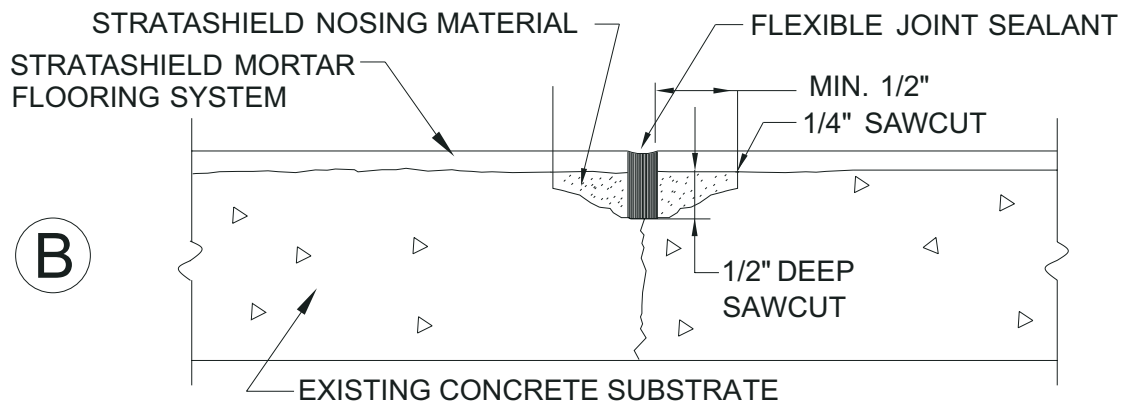
## TNEMEC STRATASHIELD STANDARD FLOORING DETAILS

CONTROL JOINT TREATMENT  
DETAILS FOR MORTAR SYSTEMS—  
ALTERNATE METHODS A, B, AND C

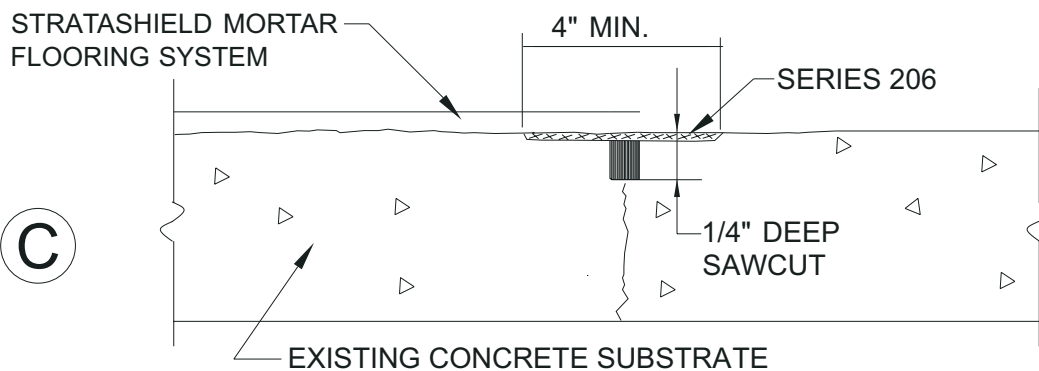
SEE SHT TFS-08A FOR METHODS B & C

**DWG. NO. TFS-08**

REV.0



FOR HEAVY VEHICULAR TRAFFIC CONDITIONS, BUILD NOSE DETAIL BY CHIPPING CONCRETE OUT TO 1/2" DEPTH AT JOINT BACK 1 1/2" MIN. TO 1/4" DEEP SAWCUT ON BOTH SIDES OF JOINT, INSTALL NOSING MATERIAL, INSTALL FLOORING SYSTEM, RESAWCUT JOINT 1/8" WIDE TO 1/2" DEPTH, AND FILL SAWCUT WITH FLEXIBLE JOINT SEALANT. (NOSING MATERIAL SERIES 218 OR 219).



FOR VERY LIGHT VEHICULAR TRAFFIC APPLICATIONS OR HEAVY FOOT TRAFFIC ONLY, ABRASE OR SHOTBLAST DEEPER ON EACH SIDE OF JOINT (30-40 MILS DEEPER), INSTALL SERIES 206 @ 30-40 MILS AND INSTALL FLOORING SYSTEM. CLOTH REINFORCING CAN BE USED IN THE SERIES 206 AS AN OPTION TO INCREASE TENSILE STRENGTH OF THE FLOOR SYSTEM OVER THE JOINT

FLOORING SYSTEMS: SERIES 223, 237, 238, 239 OR 244  
OVER SERIES 201 PRIMER AND OVER PERTINENT FILLER/SURFACERS,  
UNDERLAYMENTS AND REPAIR PRODUCTS SUCH AS SERIES 206, 214, 218 AND 219.

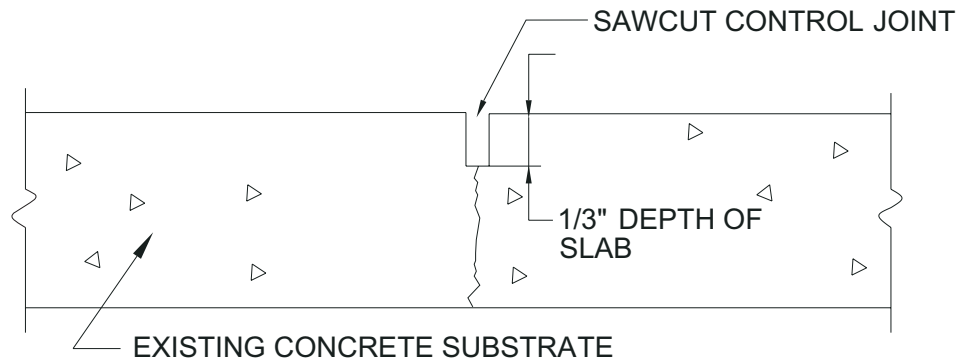
## TNEMEC STRATASHIELD STANDARD FLOORING DETAILS

CONTROL JOINT TREATMENT  
DETAILS FOR MORTAR SYSTEMS—  
ALTERNATE METHODS A, B, AND C

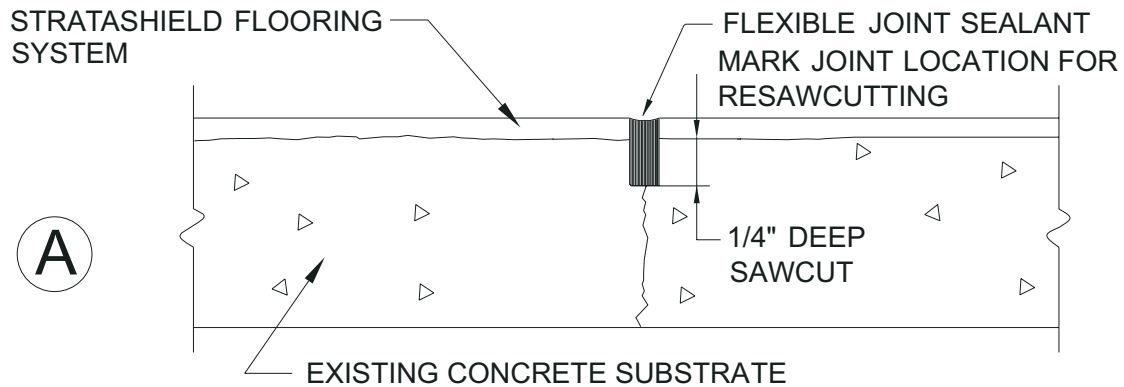
SEE SHT TFS-08 FOR METHOD A

**DWG. NO. TFS-08A**

REV.0



TYPICAL SECTION  
EXISTING SAWCUT CONTROL JOINT



FOR LIGHT VEHICULAR TRAFFIC APPLICATIONS OVERLAY FLOOR OVER CONTROL JOINT, ALLOW TO CURE, THEN SAWCUT AND FILL WITH FLEXIBLE JOINT SEALANT.

FLOORING SYSTEMS: SERIES 210, 222, 224, 237, 238, 239 OR 245  
OVER SERIES 201 PRIMER AND OVER PERTINENT FILLER/SURFACERS,  
UNDERLAYMENTS AND REPAIR PRODUCTS SUCH AS SERIES 206, 214, 218 AND 219.

TREAT CONSTRUCTION JOINTS USING SAME METHODS FOR SELF-LEVELING  
OR LAMINATE FLOOR SYSTEMS.

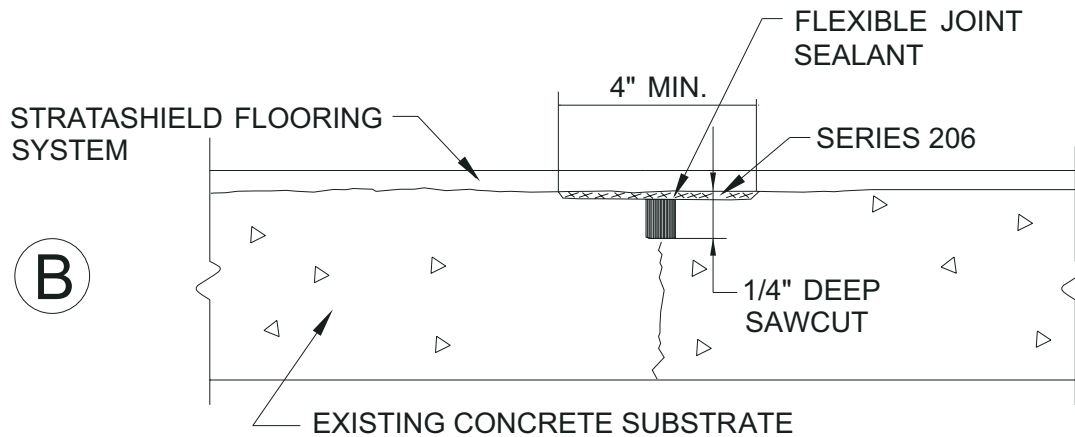
## TNEMEC STRATASHIELD STANDARD FLOORING DETAILS

CONTROL JOINT TREATMENT DETAILS  
FOR SELF-LEVELING AND LAMINATE SYSTEMS—  
ALTERNATE METHODS A AND B

**DWG. NO. TFS-09**

REV.0

SEE SHT TFS-09A FOR METHOD B



FOR VERY LIGHT VEHICULAR TRAFFIC APPLICATIONS OR HEAVY FOOT TRAFFIC ONLY, ABRASE OR SHOTBLAST DEEPER ON EACH SIDE OF JOINT (30-40 MILS DEEPER), INSTALL SERIES 206 @ 30-40 MILS, AND INSTALL FLOORING SYSTEM. TAPE REINFORCING CAN BE USED IN THE SERIES 206 AS AN OPTION TO INCREASE TENSILE STRENGTH OF THE FLOOR SYSTEM OVER THE JOINT.

FLOORING SYSTEMS: SERIES 210, 222, 224, 237, 238, 239 OR 245  
OVER SERIES 201 PRIMER AND OVER PERTINENT FILLER/SURFACERS,  
UNDERLAYMENTS AND REPAIR PRODUCTS SUCH AS SERIES 206, 214, 218 AND 219.

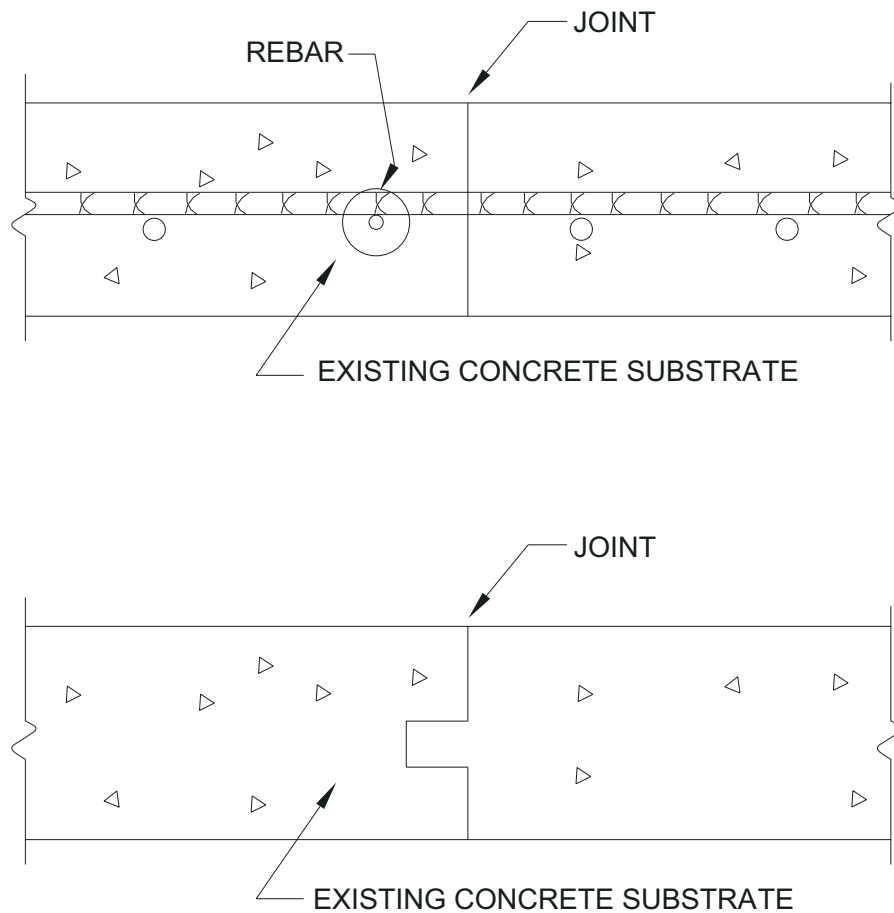
## TNEMEC STRATASHIELD STANDARD FLOORING DETAILS

CONTROL JOINT TREATMENT DETAILS  
FOR SELF-LEVELING AND LAMINATE SYSTEMS—  
ALTERNATE METHODS A AND B

SEE SHT TFS-09 FOR METHOD A

**DWG. NO. TFS-09A**

REV.0



ALTERNATE METHODS FOR TREATMENT OF CONSTRUCTION JOINTS SHOULD BE THE SAME AS CONTROL JOINTS. USE METHODS A OR B (SHT 9 OR 9A) OR CONSULT WITH TNEMEC TECHNICAL SERVICE FOR FURTHER TECHNICAL ADVICE.

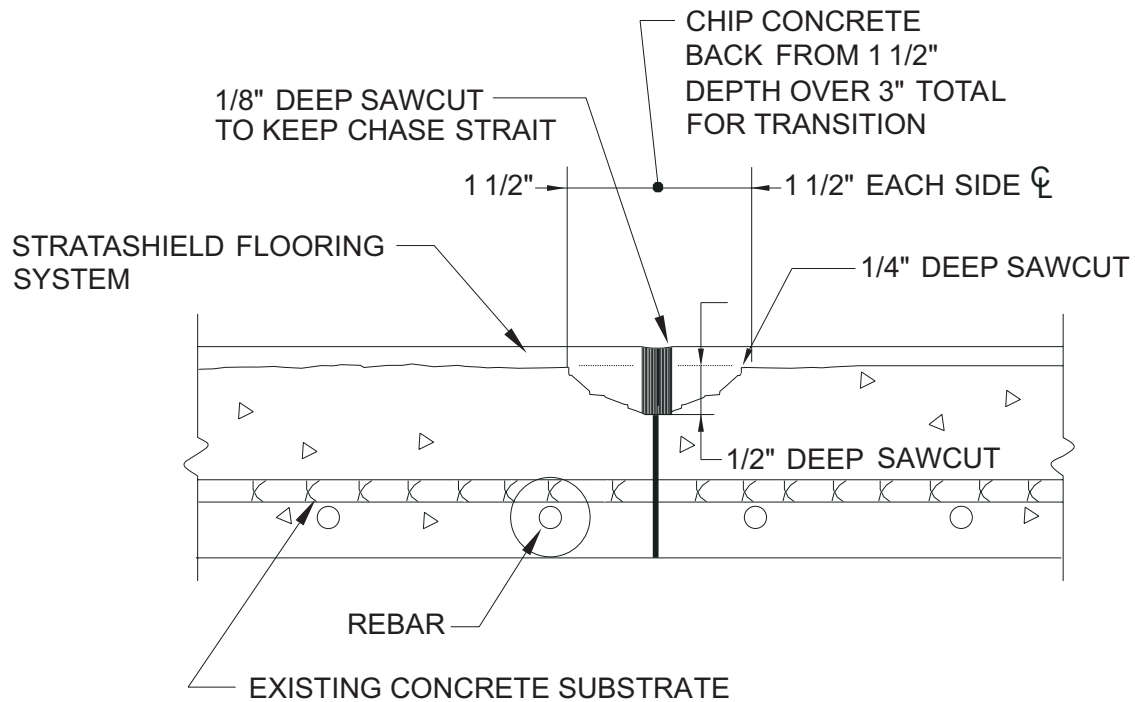
## TNEMEC STRATASHIELD STANDARD FLOORING DETAILS

EXISTING CONSTRUCTION JOINTS

SEE SHT TFS-10A FOR NEW TREATMENT

**DWG. NO. TFS-10**

REV.0



FLOORING SYSTEMS: SERIES 223, 237, 238, 239 OR 244  
OVER PERTINENT FILLER/SURFACERS, UNDERLAYMENTS AND  
REPAIR PRODUCTS SUCH AS SERIES 206, 214, 218 AND 219.  
DO NOT APPLY 206 IN NOSE DETAILS AT CONSTRUCTION OR CONTROL JOINTS.

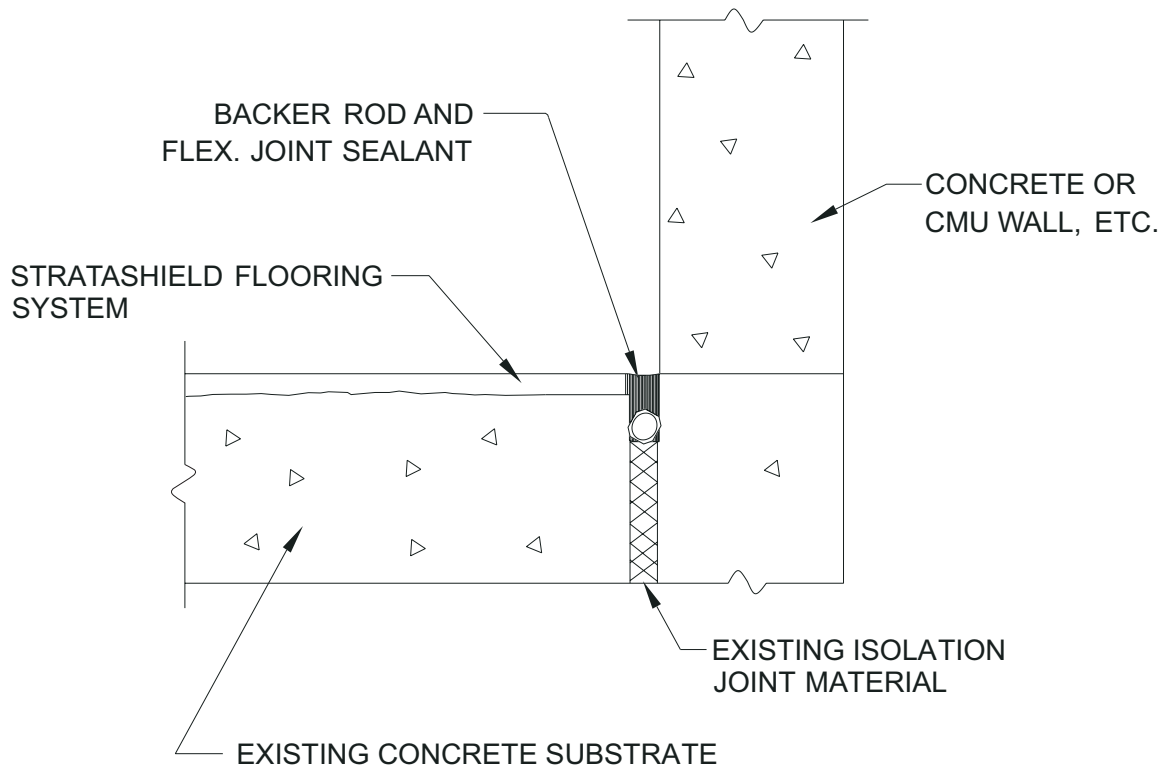
## TNEMEC STRATASHIELD STANDARD FLOORING DETAILS

DETAIL TREATMENT FOR MORTAR  
AT CONSTRUCTION JOINTS

DWG. NO. TFS-10A

REV.0





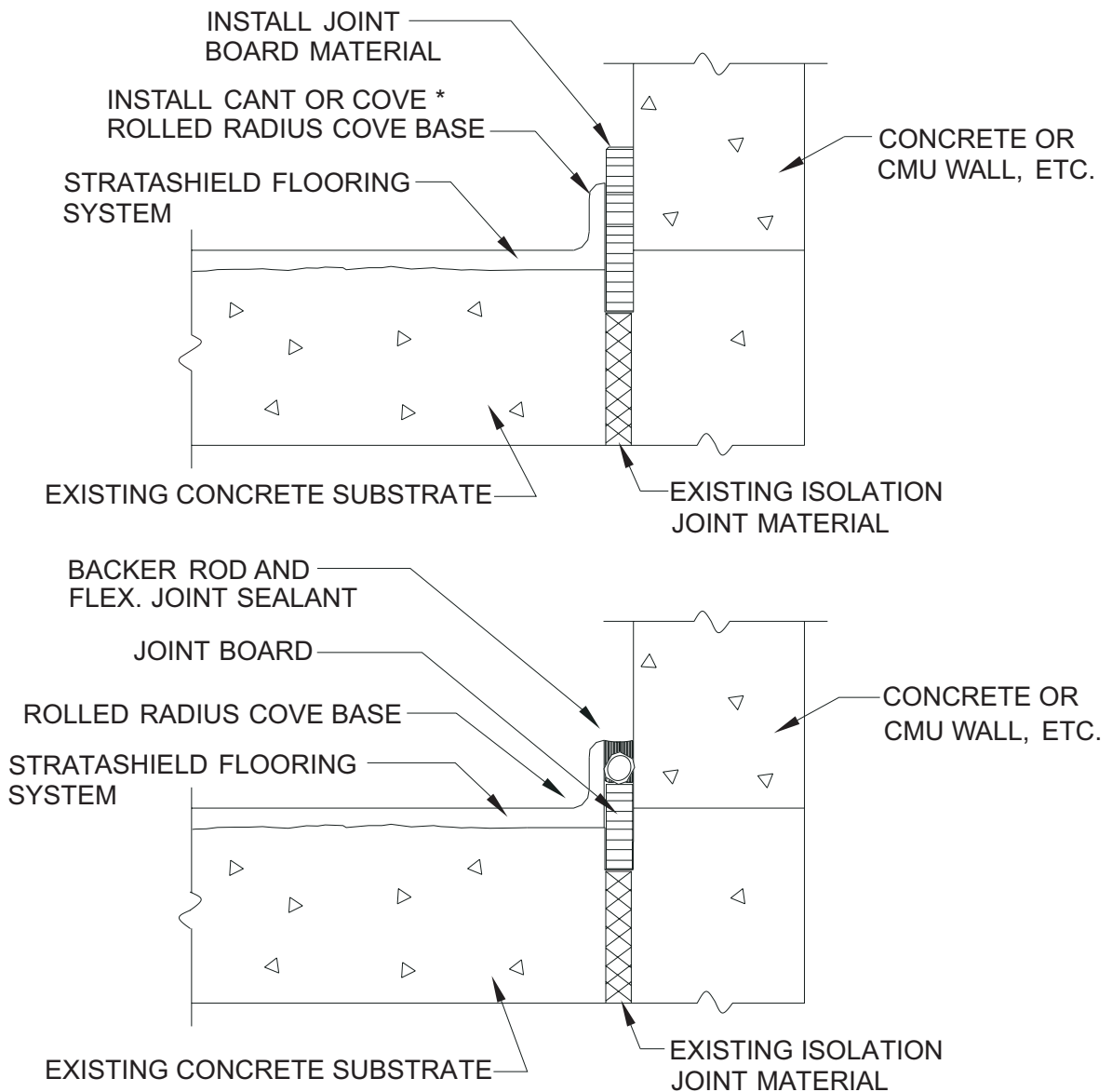
FLOORING SYSTEMS: SERIES 210, 222, 223, 224, 237, 238, 239, 244 OR 245  
 OVER 201 PRIMER OR OVER PERTINENT FILLER/SURFACERS, UNDERLAYMENTS  
 AND REPAIR PRODUCTS SUCH AS SERIES 206, 214, 218 AND 219.

## TNEMEC STRATASHIELD STANDARD FLOORING DETAILS

ISOLATION JOINT TREATMENT FOR LAMINATE  
 AND MORTAR AT WALL/FLOOR JUNCTION WHERE  
 NO COVE BASE REQUIRED

**DWG. NO. TFS-11**

REV.0



FLOORING SYSTEMS: SERIES 210, 222, 223, 224, 237, 238, 239, 244 OR 245  
OVER 201 PRIMER OR OVER ALL UNDERLAYMENTS OR FILLER/SURFACER  
MATERIALS OR COVE BUILDING MATERIALS.

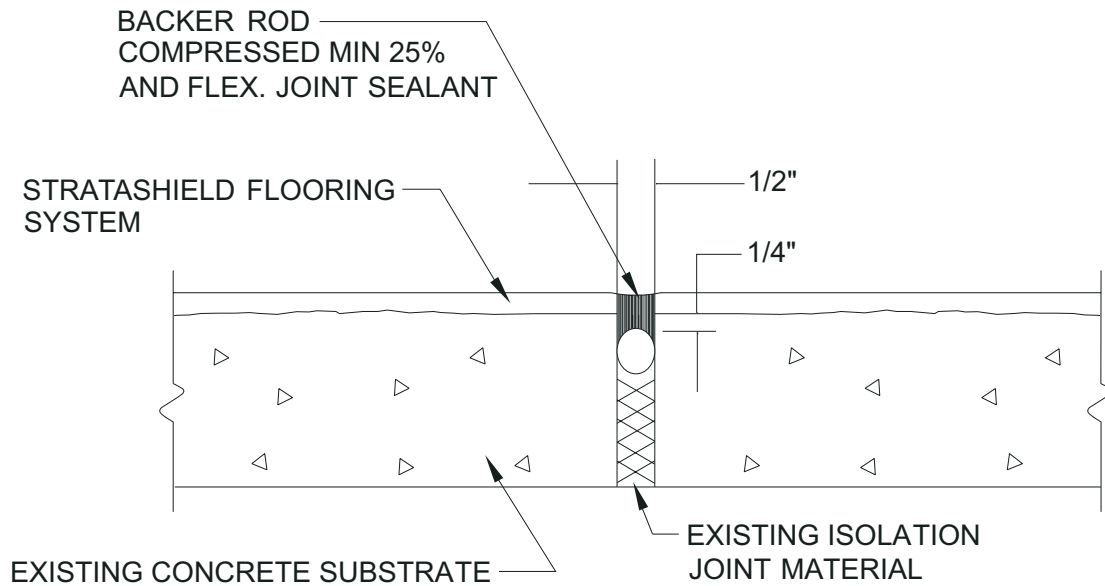
\* ONCE COVE BASE IS CURED, CUT JOINT BOARD OFF 3/4"-1" BELOW TOP OF COVE BASE AND INSTALL BACKER ROD AND FLEXIBLE JOINT SEALANT.

## TNEMEC STRATASHIELD STANDARD FLOORING DETAILS

ISOLATION JOINT TREATMENT FOR LAMINATE  
AND MORTAR AT WALL/FLOOR JUNCTION WHERE  
COVE BASE IS REQUIRED

DWG. NO. TFS-12

REV.0



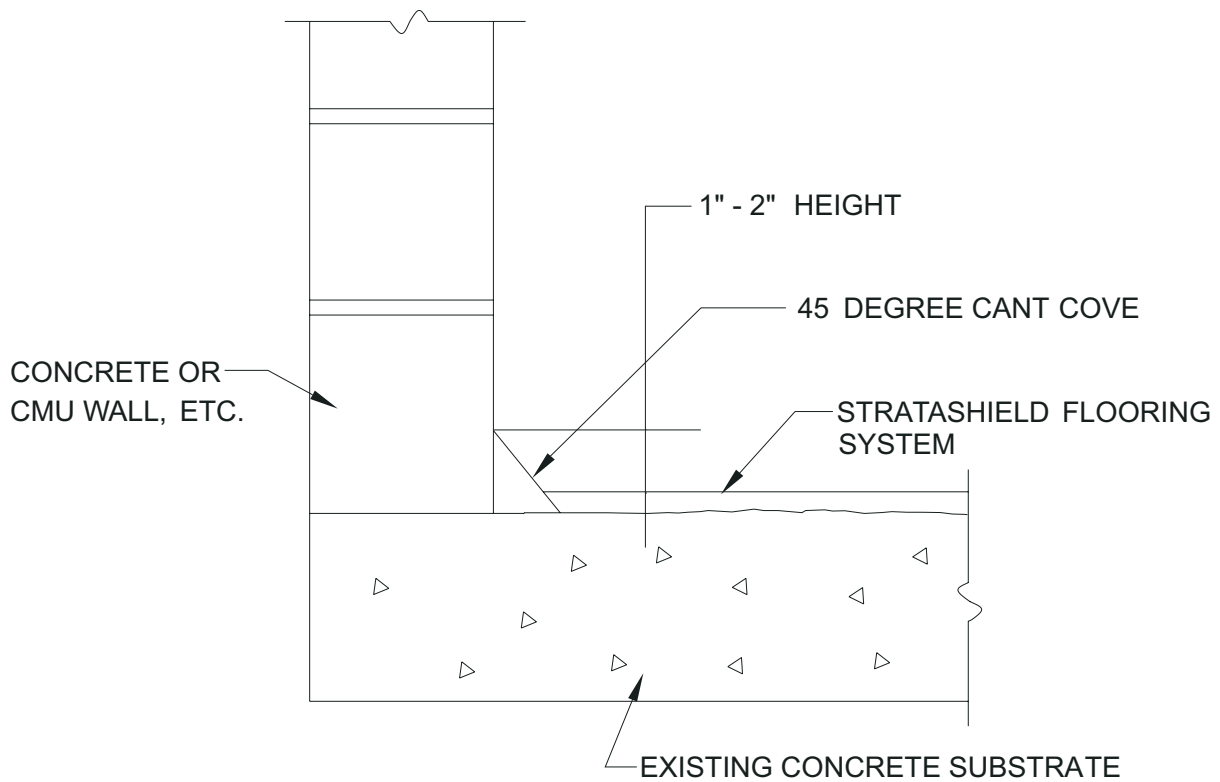
NOTE: FLEXIBLE JOINT SEALANT WIDTH TO DEPTH RATIO SHOWN APPROXIMATE 2:1.  
DETAIL CAN BE BUILT BY INSTALLING FLOOR SYSTEM OVER JOINT, RESAWCUTTING,  
AND INSTALLING BACKER ROD AND SEALANT.

## TNEMEC STRATASHIELD STANDARD FLOORING DETAILS

EXPANSION JOINT TREATMENT DETAIL

DWG. NO. TFS-13

REV.0



GENERAL NOTE:

USE DRY MIXED TROWELABLE VERSION  
OF FLOORING SYSTEMS TO BUILD  
COVE BASES.

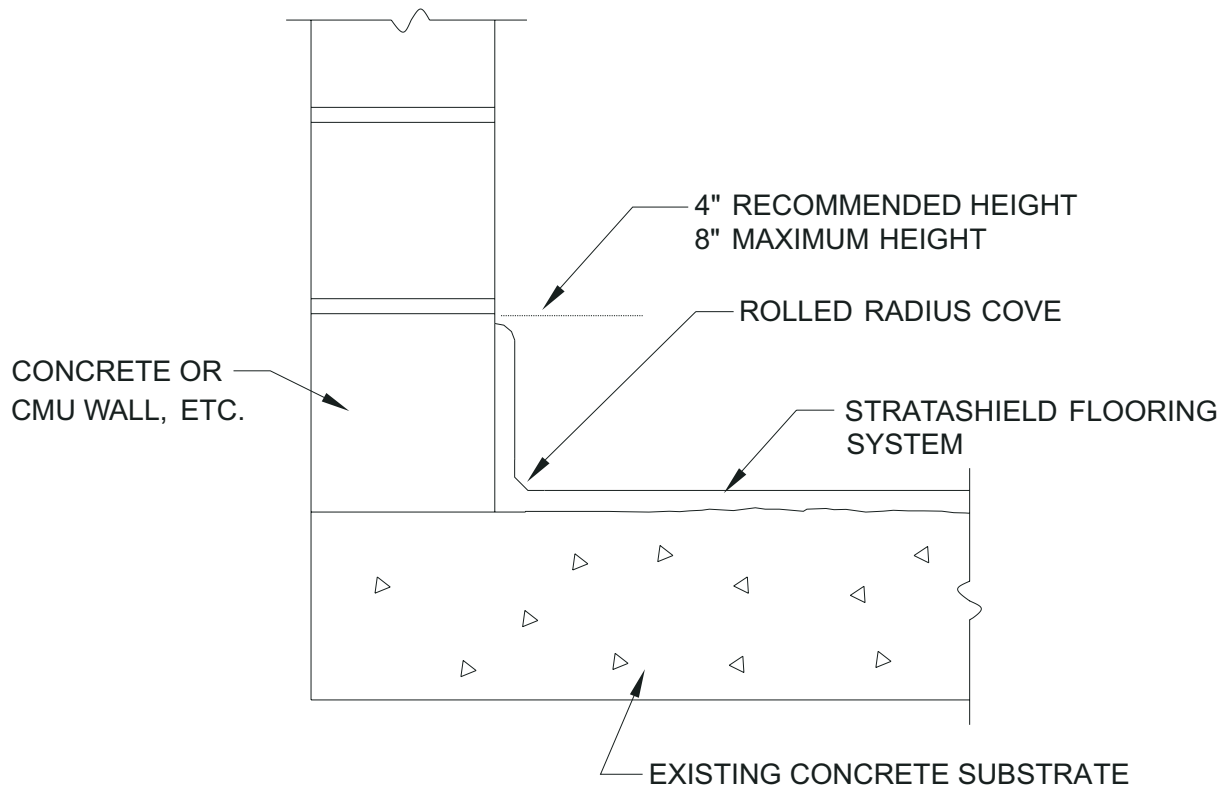
FLOORING SYSTEMS: SERIES 210, 222, 223, 224, 237, 238, 239, 244 OR 245  
OVER 201 PRIMER OR OVER ALL UNDERLAYMENTS OR FILLER/SURFACER  
MATERIALS OR COVE BUILDING MATERIALS.

## TNEMEC STRATASHIELD STANDARD FLOORING DETAILS

CANT COVE BASE DETAIL  
FOR LAMINATE AND MORTAR SYSTEMS

**DWG. NO. TFS-14**

REV.0



GENERAL NOTE:

USE DRY MIXED TROWELABLE VERSION  
OF FLOORING SYSTEMS TO BUILD  
COVE BASES.

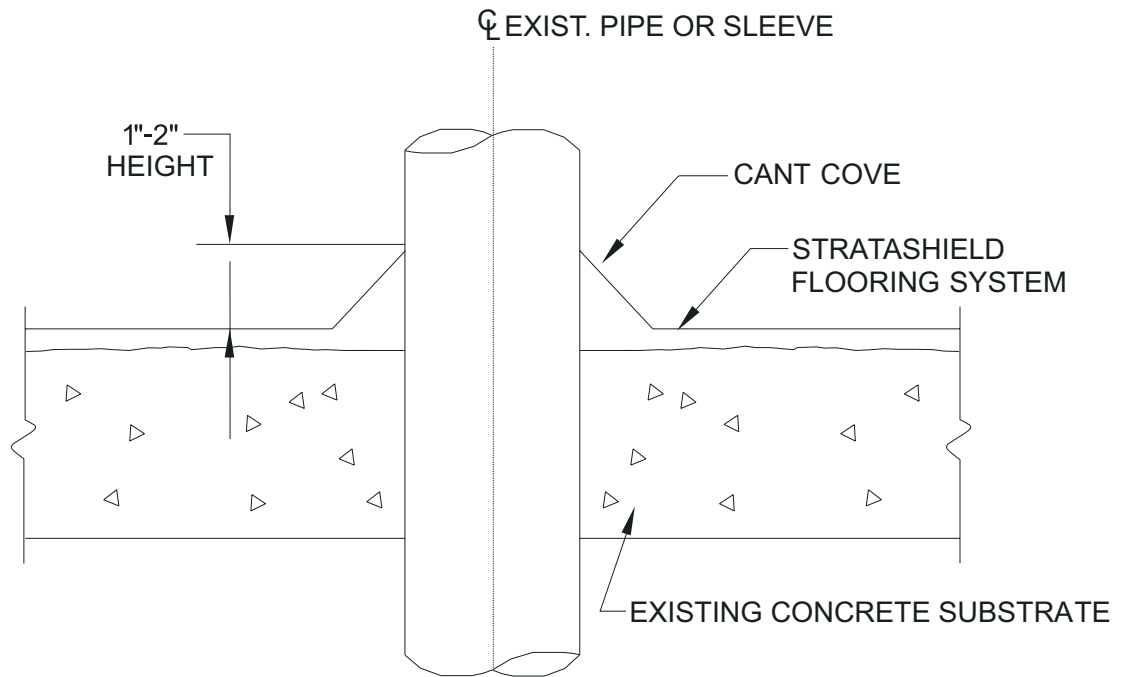
FLOORING SYSTEMS: SERIES 210, 222, 223, 237, 238, 239, 244 OR 245  
OVER 201 PRIMER OR OVER ALL UNDERLAYMENTS OR  
FILLER/SURFACER MATERIALS OR COVE BUILDING MATERIALS.

## TNEMEC STRATASHIELD STANDARD FLOORING DETAILS

ROLLED RADIUS COVE BASE DETAIL  
FOR LAMINATE AND MORTAR SYSTEMS

**DWG. NO. TFS-15**

REV.0



GENERAL NOTE:  
USE DRY MIXED TROWELABLE VERSION  
OF FLOORING SYSTEMS TO BUILD  
COVE BASES.

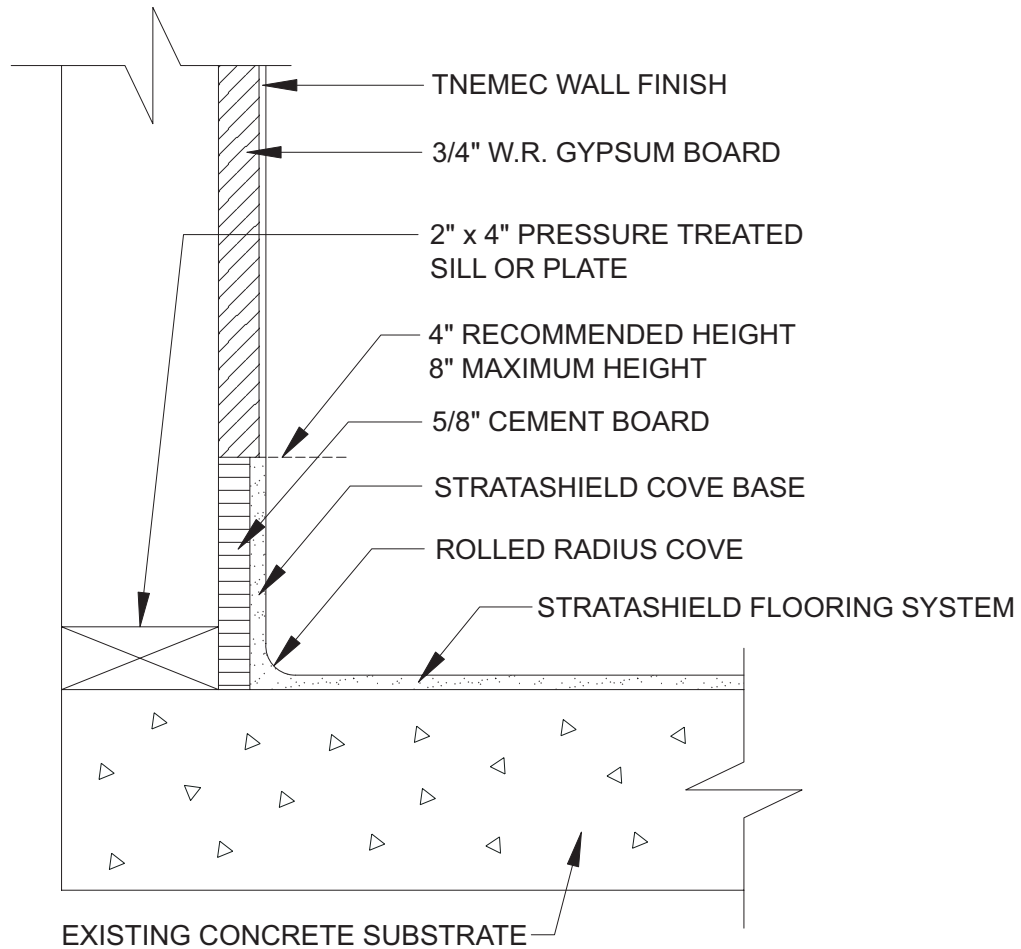
FLOORING SYSTEMS: ALL STRATASHIELD FLOORING SYSTEMS

## TNEMEC STRATASHIELD STANDARD FLOORING DETAILS

CANT COVE AT SLEEVED OR  
NON-SLEEVED PIPE PENETRATION IN FLOOR

**DWG. NO. TFS-16**

REV.0



GENERAL NOTE:

USE DRY MIXED TROWELABLE VERSION  
OF FLOORING SYSTEMS TO BUILD COVE  
BASES.

FLOORING SYSTEMS: SERIES 210, 222, 223, 237, 238, 239, 244 OR 245  
OVER 201 PRIMER OR OVER ALL UNDERLAYMENTS OR  
FILLER/SURFACER MATERIALS, COVE BUILDING MATERIALS OR  
REPAIR PRODUCTS SUCH AS SERIES 206, 214, 218, 219.

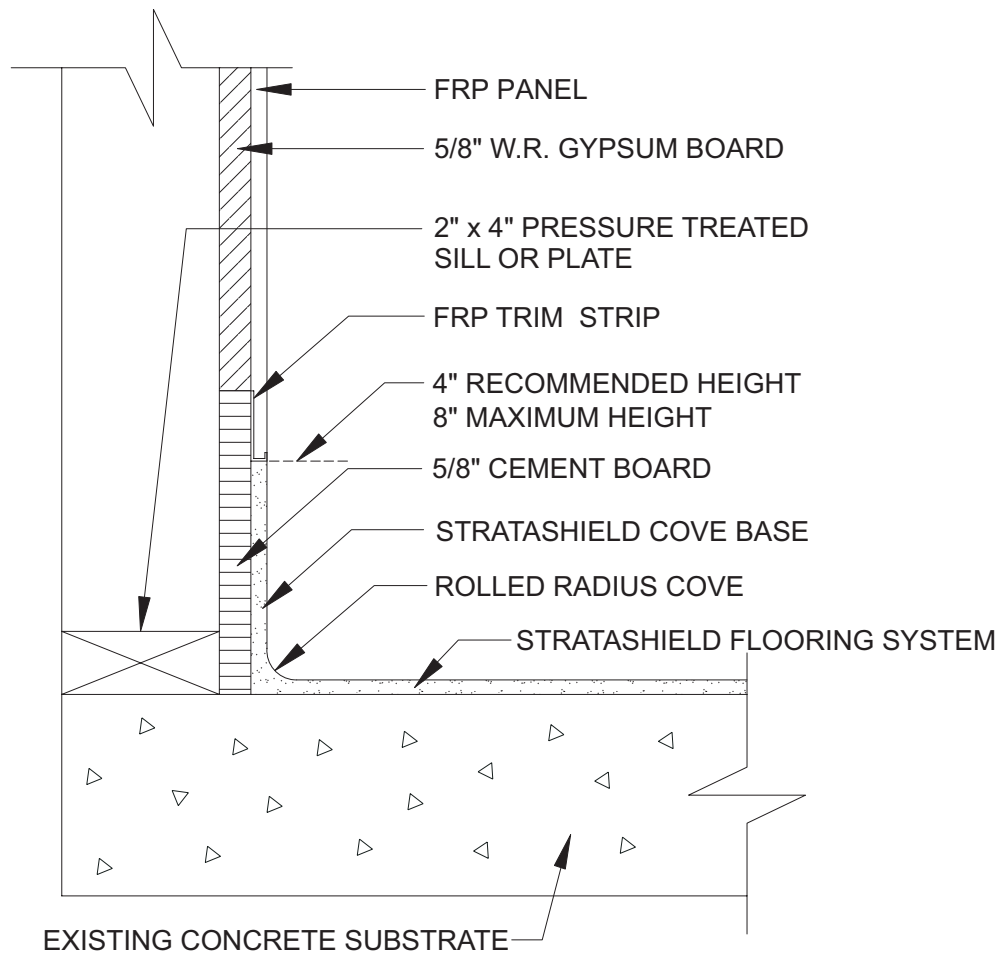
## TNEMEC STRATASHIELD STANDARD FLOORING DETAILS

COVE BASE DETAIL FOR NEW GYPSUM BOARD WALLS

**DWG. NO. TFS-17**

REV.0





**GENERAL NOTE:**

USE DRY MIXED TROWELABLE VERSION  
OF FLOORING SYSTEMS TO BUILD COVE  
BASES.

FLOORING SYSTEMS: SERIES 210, 222, 223, 237, 238, 239, 244 OR 245  
OVER 201 PRIMER OR OVER ALL UNDERLAYMENTS OR  
FILLER/SURFACER MATERIALS, COVE BUILDING MATERIALS OR  
REPAIR PRODUCTS SUCH AS SERIES 206, 214, 218, 219.

## TNEMEC STRATASHIELD STANDARD FLOORING DETAILS

COVE BASE DETAIL FOR FRP PANEL WALLS

**DWG. NO. TFS-17A**

REV.0