

Seamless Flooring for Lasting Beauty and Durability.

Regardless of your building's environment, the aesthetics of its flooring is just as important as the color schemes or lighting fixtures you choose. In certain areas, however, flooring must also be durable enough to endure heavy abuse from abrasion, impact, chemicals and high-pressure cleaning and scrubbing. That's where you need StrataShield Decorative Quartz floor toppings. Our Deco-Tread and Deco-Trowel flooring products combine the strength of an epoxy resin with the beauty of multicolored ceramic quartz aggregate for a seamless, impact-resistant surface that is easy to maintain. As the epoxy in the Decorative Quartz coating is absorbed into the concrete substrate and hardens, it forms a tenacious bond that protects against delamination which frequently occurs with glued-on vinyl or ceramic tile. The coating is fluid-applied to the appropriate thickness, creating a seamless transition from the floor to the wall that protects against moisture, cleaning solutions, chemicals and bacterial invasion. Plus, there are no unsightly grout lines, seams or joints for water to penetrate and cause damage.

With Deco-Tread and Deco-Trowel floor coatings, a variety of finishes and textures are available and can be tailored for the intended environment. Both products are available in 12 standard color blends, or you can mix and match aggregates to create a custom look. This combination of performance and design flexibility makes the StrataShield Decorative Quartz flooring system ideal for pharmaceutical plants, laboratories, food and beverage processing facilities, hospital operating rooms, athletic locker areas and school cafeterias. For more information on Deco-Tread, Deco-Trowel, or any other StrataShield products, contact your local Themec representative.

Series 222 Deco-Tread®

A durable, quartz-reinforced epoxy floor topping applied by double broadcast at $\frac{1}{8}$ " thickness. Protects against chemicals, impact, and abrasion.

Series 223 Deco-Trowel®

A trowel-applied mortar version of Deco-Tread applied at $\frac{3}{16}$ " - $\frac{1}{4}$ " thickness. Especially useful for resurfacing areas with heavy concrete damage.

Faced with constant traffic and daily cleaning, the floor of Meramec Community College's food court was in need of repair. For a monolithic, seamless, easy-to-clean floor with a uniform non-skid finish, the college chose Deco-Tread.

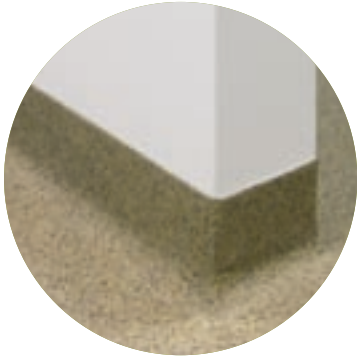
DECORATIVE QUARTZ BENEFITS

- Seamless, monolithic surface
- Easily cleaned and maintained
- Superior aesthetics
- Extremely durable
- Low odor
- 100% solids epoxy
- Broadcast or mortar application



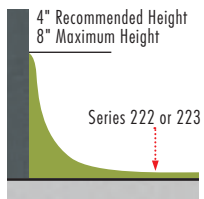
Available Colors

Choose from a range of standard and custom quartz color blends to create a unique floor for your environment. All color blends are available for both broadcast and mortar applications. Series 223 Deco-Trowel will exhibit a different texture and appearance than Series 222 Deco-Tread shown below.

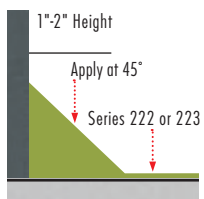


A seamless transition from the floor to the wall can be created by integrating either a cant or rolled radius cove into the existing wall, unlike rubber base materials.

Rolled Radius Cove



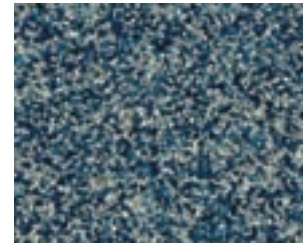
Cant Cove



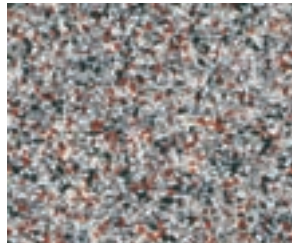
Q201



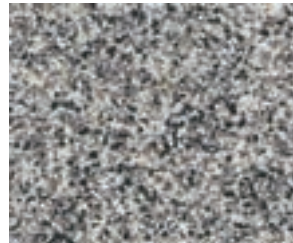
Q202



Q203



Q204



Q205



Q206



Q207



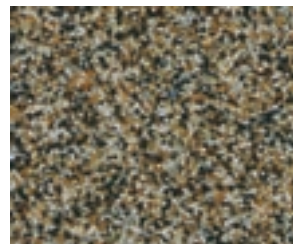
Q208



Q209



Q210



Q211



Q212

NOTE: Colors shown are representations of actual standards and will vary in appearance due to product, texture variations, gloss level, application method, and thickness of the applied film. Samples are available upon request.



StrataShield is a division of Tnemec Company Incorporated.

6800 Corporate Drive Kansas City, Missouri 64120-1372 1-866-4STRATA Fax: 1-816-483-3969 www.stratashield.com

Published technical instructions and pricing are subject to change without notice. Contact your Tnemec technical representative for current technical data, instructions and pricing. Warranty information: The service life of Tnemec coatings will vary. For warranty, limitation of seller's liability and product information, please refer to Tnemec Product Data Sheets at www.tnemec.com or contact your Tnemec technical representative. ©Tnemec Company, Inc. 2005 Printed in the USA S15M1005 YFLY004